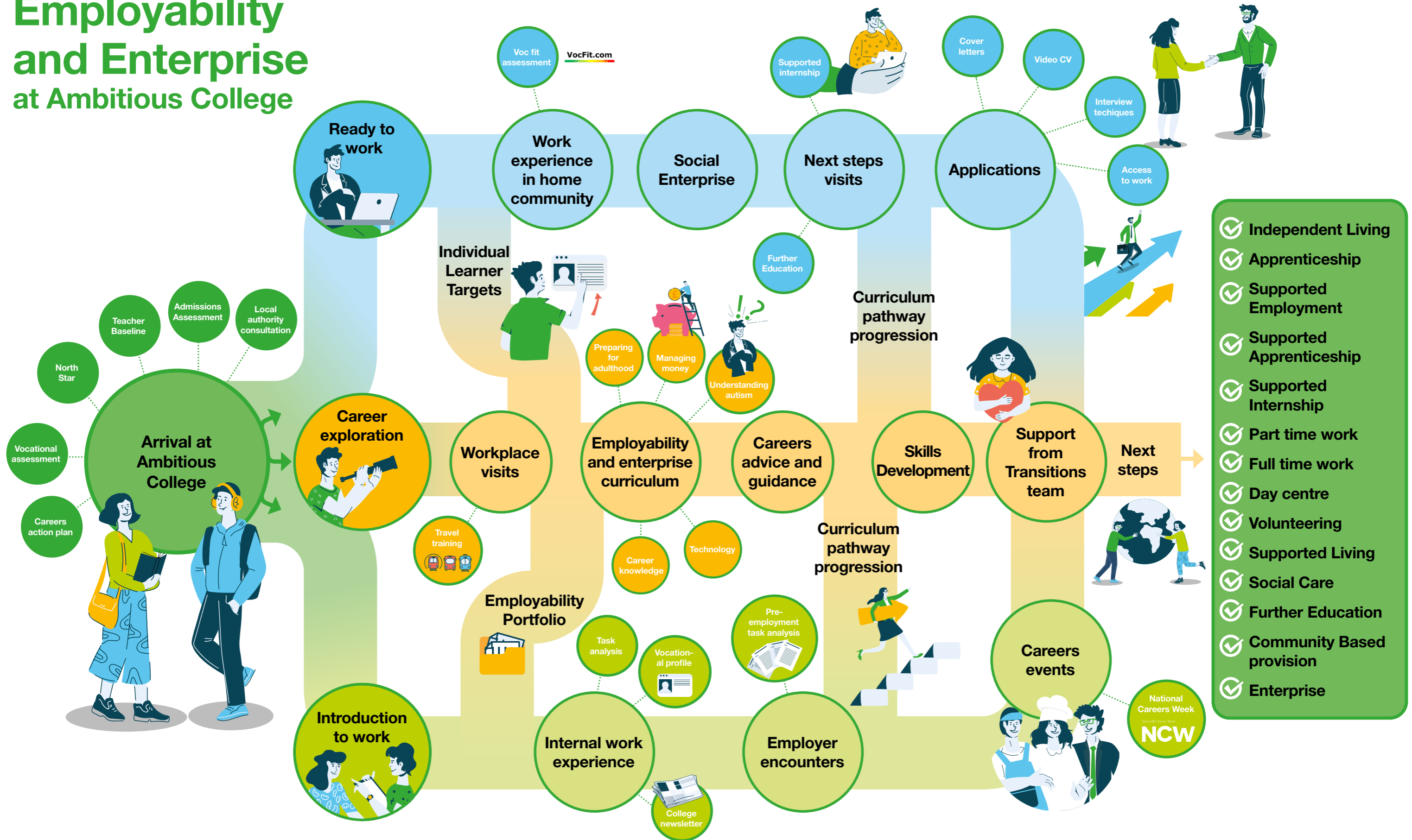


Employability and Enterprise at Ambitious College



This visual resource is designed to illustrate the Employability and Enterprise Journey of learners at Ambitious College. We understand that our learners are individuals, thus their journeys through careers and employment are not linear.

From their arrival at Ambitious College, all relevant learner information is collated and utilised to create an Employability and Enterprise Action Plan.

This information includes EHCP outcomes, North Star goals, admissions assessments, and teacher baselines. Following this, learners are allocated to one of three employment categories: Introduction to Work, Career Exploration, and Ready to Work. Learners are allocated to the category that best suits them.

Learners can move from category to category throughout their time at Ambitious College, accessing the resources, learning, and opportunities that are relevant to them and their outcomes. The fluidity of the learner journey allows each learner to have an individualised and bespoke careers provision.

Through personalised careers education, learners can develop their employability and independence to achieve their outcomes, as appropriate to them and their aspirations.