

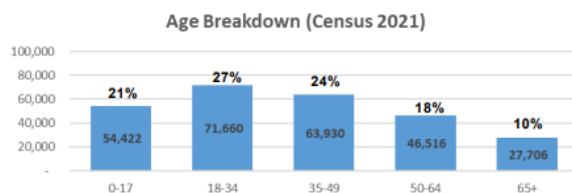
Labour Market Information for Haringey

Overview

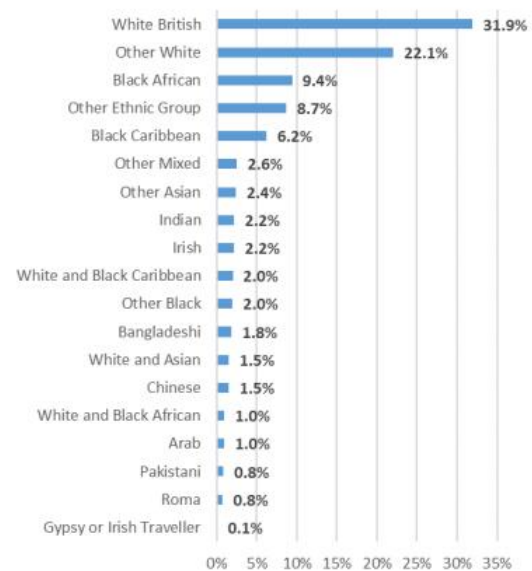
As part of our Employability and Enterprise approach at Ambitious College we endeavour to ensure that all learners, parents/carers, teachers and the employers we work with should have access to good quality information about future study options and labour market opportunities. When learners understand local career paths and labour market they can make a more informed decision on their next steps post college. We encourage parents/carers, teachers and employers to also access this information. The following document is specific for the geographical area surrounding Hounslow and supports you to understand the labour market context, local job vacancies and opportunities.

Location and Population

Haringey, situated 6.5 miles north of the City of London, spans over 11 square miles and shares borders with six London councils. The borough has a population of 260,000, characterised by its youthful and diverse demographic.



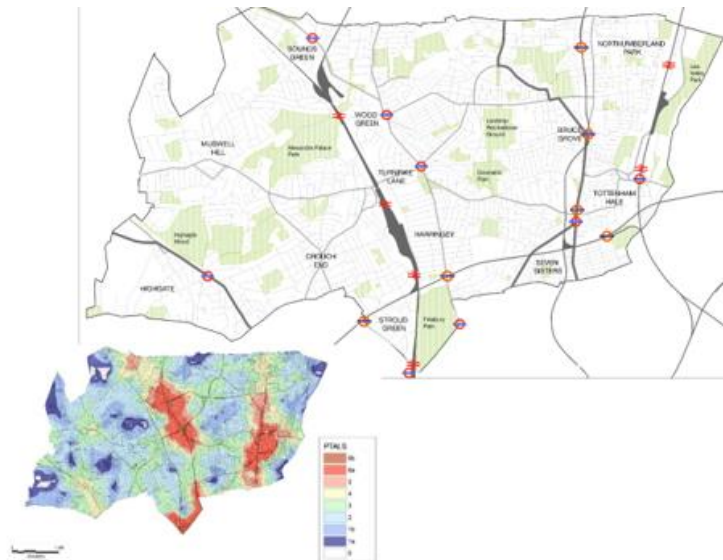
**Distribution of Pop'n by Ethnic group
(Census 2021)**



Source: Census 2021

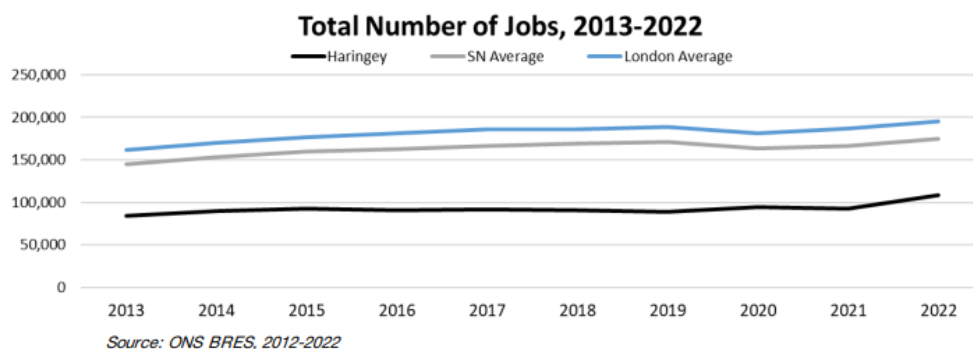
Transport Links

Haringey has excellent transport links, with over 40 bus routes, 11 overground stations, 7 underground stations, and is located just 10 minutes from Kings Cross. The borough is also set to benefit from Crossrail 2, due to be completed by 2030.

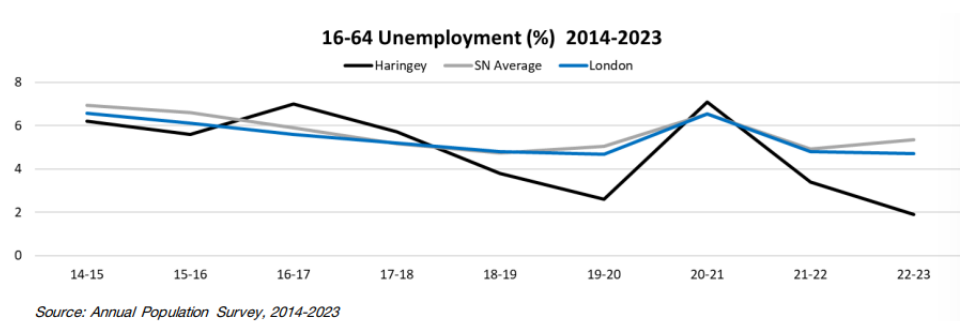


Employment

- 27% of Haringey residents work within the borough, with many commuting to other parts of London.
- There are 180,000 jobs in Haringey, marking a 20% increase in the past year.

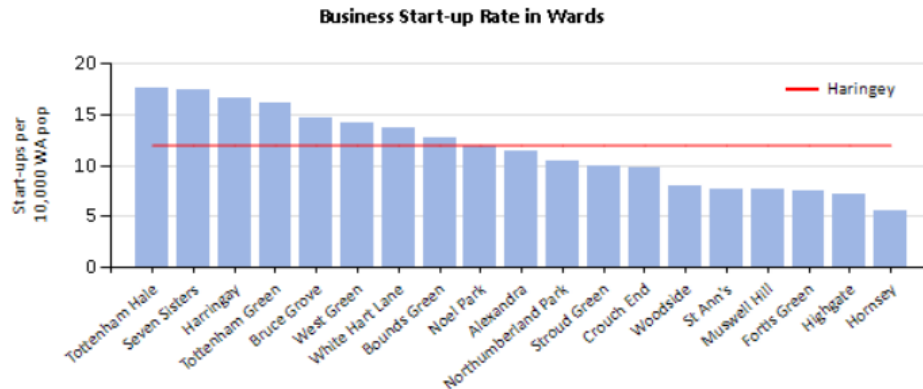


- Historically, medium-scale manufacturing has been key, though now in decline.
- The Public Sector (e.g., education, health) remains the largest employer.
- Unemployment rates have fallen below the London average.



Key Industries

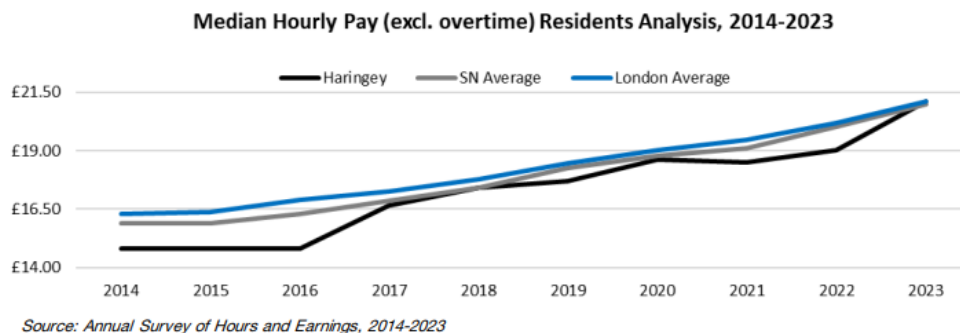
- Haringey's strong manufacturing sector includes pianos, military tunics, contemporary fashion, furniture, and artisan products.
- Other key sectors include construction, distribution, hospitality, and public administration.
- 93.1% of businesses are small, employing fewer than 10 people.



- Emerging sectors: tech, real estate, and business activities.

Pay

- In 2021, the average weekly pay in Haringey was £703, slightly below London's average of £728, but above Great Britain's average of £613.
- Median hourly pay is £21.10, reflecting a 10% increase from the previous year, aligning with London averages.



- However, 20% of residents earn below the London Living Wage.

Further Information

For more detailed labour market information, visit:

[NOMIS](#) provides up-to-date information on London's Labour Market

[LMI for All](#) is an online data portal that consolidates and standardises reliable labour market information from various sources to support informed career decisions.

Also, Haringey website also offers a wealth of information, including [census statistics](#), and [economy strategies and policies](#).